

**B.C. ASSOCIATION OF CLINICAL COUNSELLORS
STATEMENT OF FINANCIAL POSITION**

December 31

ASSETS

CURRENT

| | 2020 | 2019 |
|-----------------------|--------------|--------------|
| Cash | \$ 1,411,712 | \$ 1,191,722 |
| Accounts Receivable | 7,341 | 6,635 |
| Prepaid Expenses | 30,246 | 30,270 |
| Rent Security Deposit | 6,382 | 6,382 |
| | 1,455,681 | 1,235,009 |

OPERATING RESERVE INVESTMENTS
COLLEGE FUND RESERVE INVESTMENTS
CAPITAL RESERVE INVESTMENTS

| | | |
|--|---------|---------|
| | 341,781 | 300,429 |
| | 143,866 | 129,907 |
| | 534,521 | 357,615 |

CAPITAL ASSETS (net)
INTANGIBLE ASSETS (net)

| | | |
|--|--------|--------|
| | 72,801 | 81,740 |
| | 49,551 | 79,004 |

| | | |
|--|--------------|--------------|
| | \$ 2,598,201 | \$ 2,183,704 |
|--|--------------|--------------|

LIABILITIES and FUND BALANCES

CURRENT LIABILITIES

| | | |
|-----------------------------|------------|------------|
| Deferred Revenue | \$ 656,741 | \$ 677,725 |
| Accounts Payable | 20,993 | 24,970 |
| Accrued Liabilities | 67,837 | 68,527 |
| Employee Deductions Payable | 866 | 805 |
| GST Payable | 28,518 | 23,346 |
| | 774,955 | 795,373 |

FUND BALANCES

| | | |
|---|-----------|-----------|
| Operating Fund | 680,727 | 439,636 |
| Invested in Capital and Intangible Assets | 122,351 | 160,744 |
| Operating Reserve | 341,781 | 300,429 |
| College Fund Reserve | 143,866 | 129,907 |
| Capital Reserve | 534,521 | 357,615 |
| | 1,823,246 | 1,388,331 |

| | | |
|--|--------------|--------------|
| | \$ 2,598,201 | \$ 2,183,704 |
|--|--------------|--------------|

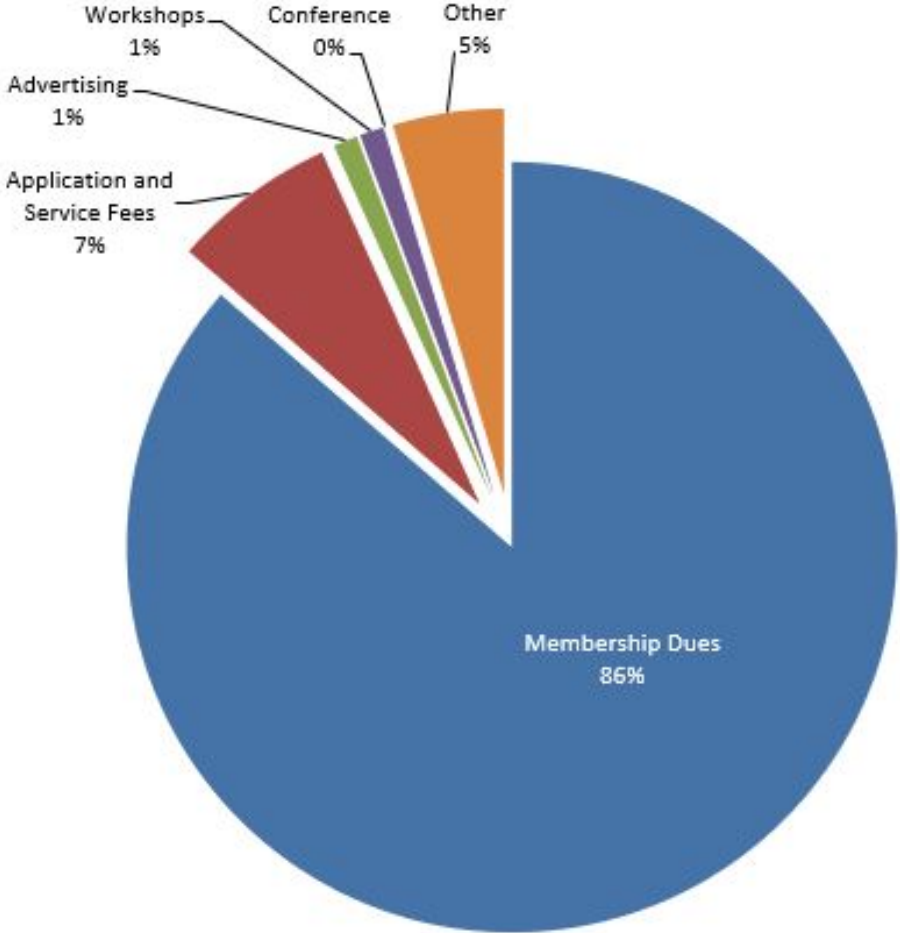
**B.C. ASSOCIATION OF CLINICAL COUNSELLORS
STATEMENT OF OPERATIONS**

| | Year Ended December 31 | |
|---|-----------------------------------|-------------------|
| | 2020 | 2019 |
| REVENUES | | |
| Membership Dues | \$ 1,892,630 | 1 \$ 1,722,535 |
| Application and Service Fees | 151,493 | 118,447 |
| Advertising | 22,500 | 25,968 |
| Workshops | 22,346 | 2 84,845 |
| Conference | - | 3 97,679 |
| Other | 102,105 | 4 84,096 |
| | 2,191,074 | 2,133,570 |
| EXPENDITURES | | |
| Administration | \$ 348,450 | \$ 362,683 |
| Regulatory Services | 183,251 | 5 203,725 |
| Member Services | 283,353 | 6 514,562 |
| Human Resources | 941,105 | 7 909,080 |
| Other Expense | - | 221 |
| | 1,756,159 | 1,990,271 |
| EXCESS OF REVENUES OVER EXPENDITURES | \$ 434,915 | \$ 143,299 |

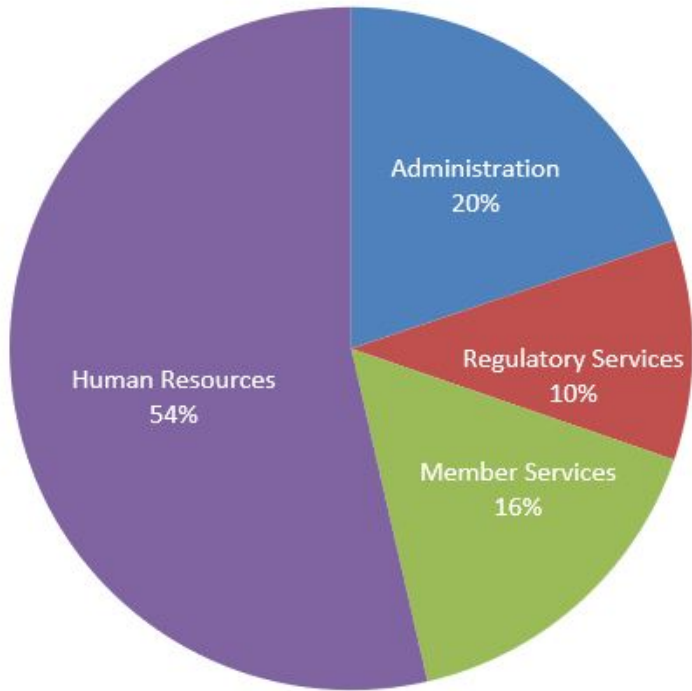
Key Notes for Changes from 2019

- 1 Membership is growing by approximately 10% a year
- 2 Due to COVID restrictions, in person workshops were cancelled.
- 3 The Bi-Annual conference is set to take place in 2021.
- 4 Investments are recorded at market value as at December 31, 2020. Unrealized gain on Investments were \$88,918 in 2020.
- 5 Professional services for investigations and conduct review.
- 6 Primary differences were the cost of the 2019 conference reflected in Member Services, as well as cancellation of all in person meetings and workshops during the COVID pandemic.
- 7 Increase in staffing cost largely due to new management structure and overlap in training of retired employee.

Revenues 2020



Expenses 2020



WAGES AND BENEFITS 2020 (2019)

